



alba spectrum
Making systems business-ready

Alba360 WMS & Data Capture

The Dynamics GP Bar Coding & Warehouse Management solution that balances simplicity and flexibility for small and medium sized Distributors.

Receiving

Picking & Shipping

Site & Bin Transfers

Stock Counts

Item Inquiry

Barcode Label Generation

Alba360 WMS is an easy to use and adaptable bar-coding/ WMS system designed to manage the flow of inventory through the warehouse.

All data captured through barcode scanners is transmitted in real-time to the Dynamics GP database. Alba360 WMS was developed for Dynamics GP and is tightly integrated with its Purchasing, Inventory Management and Order Fulfillment modules.

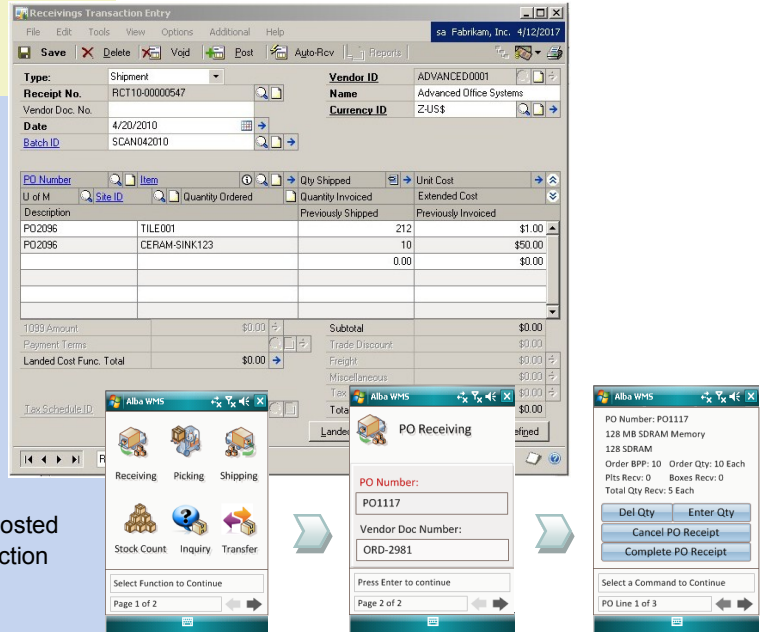
Receiving

Flexible Receiving, Label Printing and Transfer options

- Receive inventory via barcode scanners against existing purchase orders in Dynamics GP. The barcode scanning interface uses Dynamics GP rules and item configuration to display appropriate information and prompts.
- The items are received into the default Receiving BIN. Warehouse staff can then put away received items via Bin-to-Bin Transfer.

Bulk Receiving

- Import Vendor shipment data files to generate Purchase Receipt data and print inventory labels with the Bulk Receiving Module
- After processing a Mass Receipt, Alba360 creates an un-posted purchase receipt, allowing a supervisor to verify the transaction and print an Edit List before it is posted.



Picking

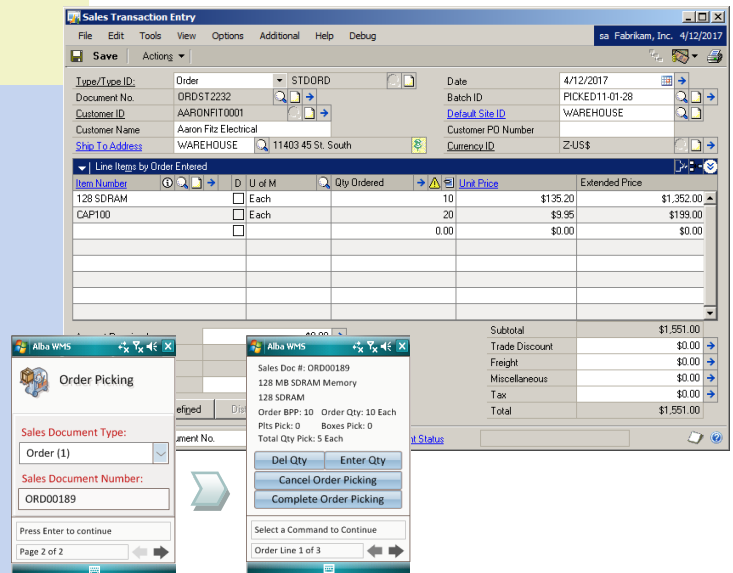
Execute Picking and Packing operations from mobile scanning units

Picking

- Confirm and pick items from sales orders, invoices and backorders.
- Manage Picking workflow by saving picked order to specific batches in GP.
- Separate fulfillment workflows for standard, lot tracked and serialized inventory.

Wave Picking [v2.0]

- Alba360 WMS allows wave picking through sales batches.
- Batches can be processed based on pre-configured delivery rules.



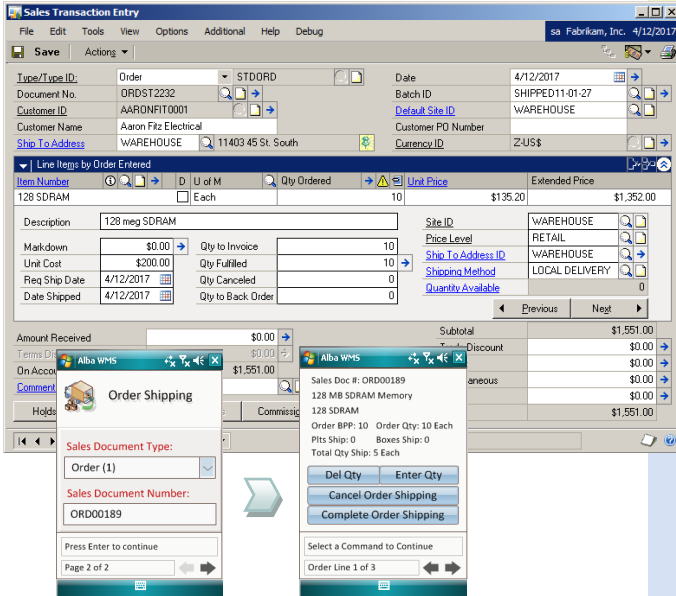
Fulfillment and Shipping

Execute Picking and Packing operations from mobile scanning units

- Allows users to fulfill orders and confirm previously picked items so they could be processed for delivery.
- Orders being fulfilled are validated via barcode scanner, preventing errors and providing key information to the warehouse staff.
- Shipping labels containing customer information and order references can be generated from the dock or from GP Sales Order Entry.

Delivery Documents [v2.0]

- Generate route pick tickets, delivery sheets and loading instructions within the picking process.



Inventory Management

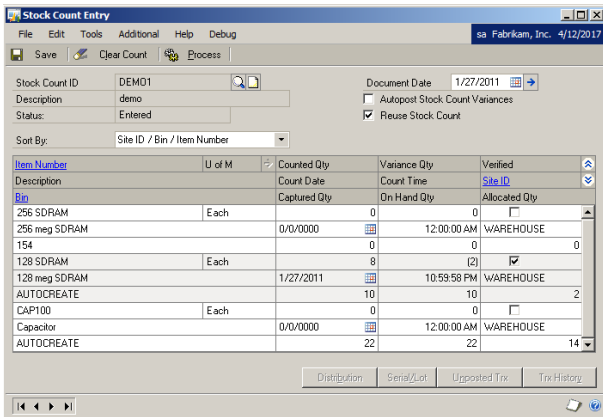
Flexible and accurate Stock Counts and Transfers

Site and Bin Transfers

- Perform Site-to-Site inventory transfer or Bin-to-Bin moves while maintaining a complete log of all transfer transactions
- Supports Bin transfers for items on un-posted PO Receipts.

Stock Counts

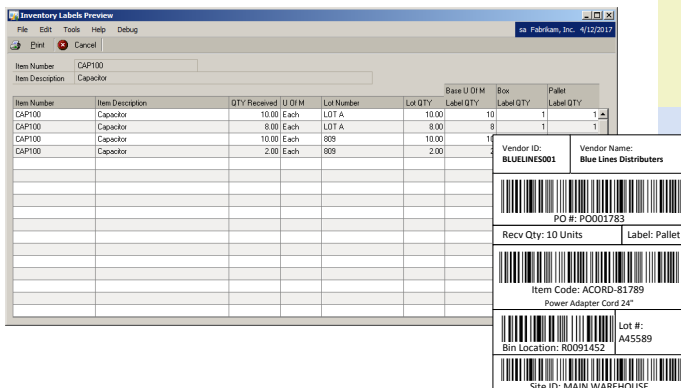
- Process stock counts via barcode scanners utilizing Stock Count Schedule in Dynamics GP.
- Warehouse Supervisor can setup Stock Count Schedules based on Bin locations, Sites or other filters.



Barcode Label Printing

Print Barcode Labels automatically or via Dynamics GP

- Barcode labels can be generated within the Purchasing and Inventory modules in Dynamics GP.
- Barcode labels are assigned to inventory unit of measure which allows separate label definitions for individual items, box and pallet label types.
- Barcode labels can be generated automatically while receiving or picking items.



System Management

Modal Graphical User Interface

- Designed with a modal workflow methodology to simplify the user interface and reduce training time and errors.
- User only sees the options necessary to move from one step to the next step in the workflow.



User-Level Security

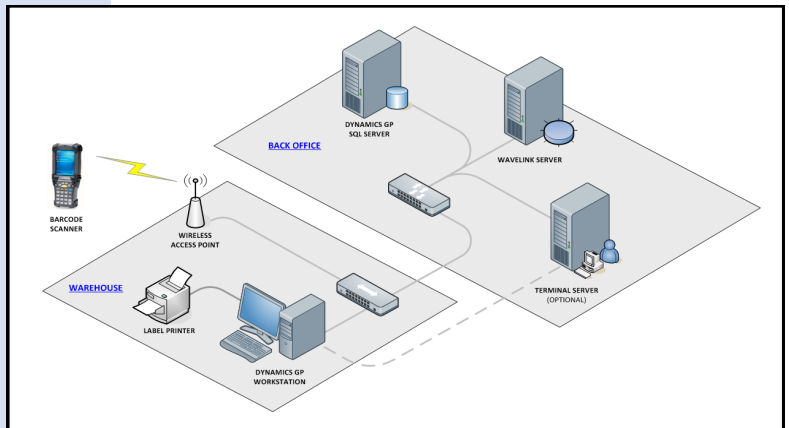
- Utilizes Dynamics GP user logins for accessing WMS application on barcode scanners
- User-level security is configurable within GP.

Multilingual Support

- Supports multiple languages and allows captions on each WMS screen to be modified or translated into other languages.
- Users can change captions based on their locale and language settings.

Service Oriented Architecture [v2.0]

- Barcode scanners running Alba360 WMS client application communicate with the WMS Application Server via Wi-Fi or wired connections.
- All communication between the barcode scanners and application server is handled through Web Services built on a robust service-oriented architecture.



Order Workflow

- Alba WMS includes a workflow that manages orders from the moment they are entered/received to the moment they are shipped.
- The workflow also allows auto-printing of documents (Packing Lists and Invoices). As orders move through the workflow, Alba WMS also moves such orders to new batches grouping them based on their workflow status.
- Alba WMS is fully integrated with Alba's Posting Server and Auto Transfer products, allowing order transfers to invoices and posting of such invoices to be incorporated into the workflow.

Web Management Portal [v2.0]

- Alba360 WMS provides a Web Portal for warehouse supervisors to monitor and track WMS users and activities.
- Warehouse staff activity by shift, employee, status, assigned and completed tasks
- Receiving activity by item, status & PO #
- Fulfillment activity by Customer, Order # & status
- Stock Count and Inventory Transfer activity by Site, Bin # & Item

Customer Experience

“...Tian-Tian Food Service has been using Alba Spectrum's bar-coding system for several years. It has given us the controls and efficiencies that we need. Luis and his team delivered several enhancements to Great Plains which have significantly improved our sales order entry process, shipment routing, and handling of catch-weight items...”

I certainly recommend Alba Spectrum's services and products to any company that uses Great Plains...”

Eddie H. President

Tian-Tian Food Service

Tian-Tian Food Service is a distributor with continuous rapid turnover of meat and seafood products. Inventory is received in nominal weight cartons (Catch Weights) that are then weighed and quantity adjusted during the fulfillment process.